

WHO IS WHO – COMPONENT TWO

MAIN CHINESE PARTNER: The Ministry of Finance (MoF) C2

PROJECT LEADERS FOR MoF:



Mr. Fu Jinlin, Director General, Department of Social Security



Mr. Di Donghui, Division Director, Department of Social Security, Actuarial Division



Mr. Wang Xiong, Division Director, Department of Social Security, Urban and Rural Minimum Income benefits Division

PROJECT C2 COORDINATORS FOR MoF:



Ms. Zhang Sicong, General Staff member, Department of Social Security, Actuarial Division

Mr. Yang Liangjin, Deputy Director, Department of Social Security, Actuarial Division

C2 COMPONENT COORDINATORS: ITALIAN INSTITUTE OF SOCIAL PROTECTION (INPS)



Valeria Bonavolontà, Director International and Comparative Studies, Research Department, INPS – C2 Coordinator from April, 2017 ongoing



Antonello Crudo, Central Director Financial Department, INPS – C2 Coordinator from April 2016 until March 2017

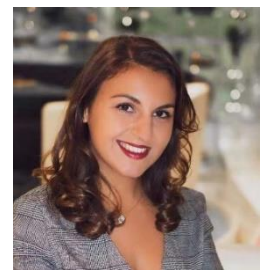
THE PROJEC TEAM IN BEIJING



Resident Expert, Michele Bruni



Main Chinese Expert 2016-2017, Li Zhen



Component Assistant, Valentina Pignotti