

Context – Sistemul de asistenta sociala din Romania

- include **12 programe** administrate de MMFPSPV, precum si unele forme de sprijin acordate de autoritatile locale
- Aceste programe se clasifica astfel :

- Programe de politici familiale;



- Programe pentru persoane cu dizabilitati;



- Alte programe (de exemplu pensia sociala);



- Programe pentru persoane cu venituri reduse bazate pe testarea mijloacelor;



SAFIR azi (2016) - Main facts

- Acopera * programe de asistenta sociala din cele 12
- 1.2 miliarde Euro din totalul de 1.7 miliarde Euro
- Procesaza in jur de 5 milioane plati lunar
- Utilizat de ~ 1000 useri interni (persoane) si ~ 500 conexii simultane
- Programe mari gestionate prin programul SAFIR (beneficiari/luna)
 - *Alocatia de stat pentru copii: ~ 3.800.000 beneficiari (copii)*
 - *Indemnizatia pentru cresterea copilului: ~ 170.000 beneficiari (persoane)*
 - *Alocatii familiale: ~ 260.000 beneficiari (familii)*
 - *Venitul minim garantat: ~ 170.000 beneficiari (familii)*
- In jur de 8 milioane persoane la o populatie de 20 milioane



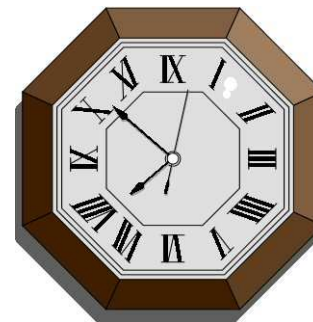
SAFIR (2015) – detalii

Social Assistance Program		Number of Beneficiaries	Payment LEI (4.45 Lei =1 Euro)	Payments through SAFIR
1	State child allowance	3,692,908	3,541,389,720	3,541,389,721
2	Child Raising Allowance	987,835	1,582,760,133	1,582,760,134
3	Child Raising Back to Work Bonus	37,305	230,620,528	230,620,529
4	Family allowance	278,349	534,327,398	534,327,399
5	Maintenance allowance for the child in placement	39,859	317,519,966	317,519,967
6	Guaranteed minimum income	244,708	676,818,743	676,818,744
7	Financial and urgent aid (one time)	2252,00	5,664,350	5,664,351
8	Refugee benefit	203,00	1.281.420,00	
9	Heating benefit	314.250,00	120.279.029,00	
10	Child with disability raising suport	20.037,00	36.281.567,00	36.281.567,00
11	Monthly food indemnity for persons with HIV/AIDS	9.373,00	44.667.273,00	44.667.273,00
12	Disability benefits (more programs)	597.723,00	1.477.499.610,00	
TOTAL LEI			9.984.444.695	6.970.049.685,00
TOTAL EURO			2.218.765.487,78	1.548.899.930,00
% through SAFIR				70%



Istoric SAFIR

- **2007 – 2008:** Dezvoltare (SAFIR, versiunea 1)
- **2009:** Pilot (2 judete)
- **2009:** Diseminare la nivel national
- **2010-2016:** Up datarea SAFIR-ului determinata de reforme in acordarea principalelor beneficii (Venitul minim garantat, Alocatia pentru sustinerea familiei, Indemnizatia pentru cresterea copilului)
- **2013-2016:** incrucisarea datelor despre beneficiarii din SAFIR cu informatii de la alte institutii (DPAPD, ANAF, CNPP, ANOFM)
 - Prima incrucisare pe volume mari de date 2013; incepand cu 2014 a devenit o practica curenta
 - Nepotrivirea de date → fisiere cu suspiciuni → prioritizare → inspectie si corectare



Cele mai importante costuri legate de SAFIR

	SAFIR SOFTWARE
2006-2009	2.7 MEuro
2010-2011	1.8 MEuro
2013-2015	0.7 MEuro
TOTAL SOFTWARE	5.2 MEURO

	HARDWARE (SERVERS)	DATABASE (ORACLE)
2007-2009	1.9 MEuro	0.9 MEuro
2010-2011	1.0 Meuro	0.6 Meuro
TOTAL HW+DB	4.4 MEURO	

TOTAL SAFIR (SW+HW+DB)	9.6 MEURO
-----------------------------------	------------------

SAFIR

Doua sisteme de Business

SAFIR include doua sisteme de business :

- ***Sistemul Operational*** – gestionarea informatiilor referitoare la beneficiari si plata
 - Modul Data input
 - Modul Data view
 - Modul Benefits rules management
 - Modul de plati
 - Modul de administrare

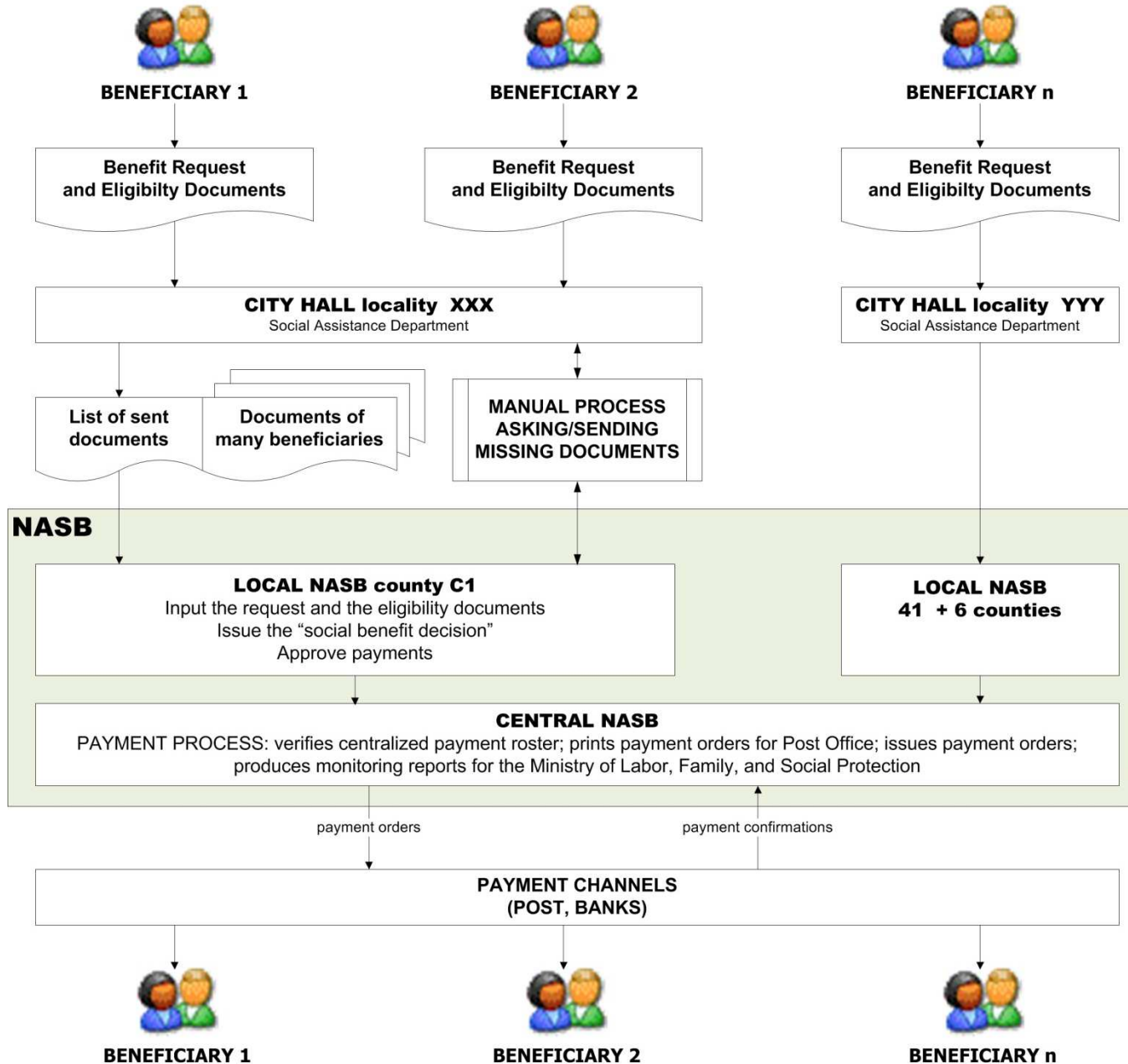
- ***Sistemul Decizional*** – rapoarte si analize
- Support system for decision making at central and county level
 - Colecteaza informatii de la alte institutii publice
 - Identificarea suspiciunilor prin incrucisari mari de baze de date

SAFIR: Current Version

Technical details

Major component	Description
Architecture (Operational System)	CENTRALIZED three tiers architecture client tier: Web browser, middle tier: Java EE application servers the backend tier: Oracle Database Server
Interface	WEB
Operating System	LINUX RED HAT
Application server (Operational System)	JBOSS Application
Database Engine	ORACLE RAC (current version is 10g)
Software Development	JAVA EE framework as development standards, GWT – Google Web Toolkit framework for the creation of graphic interfaces
Operational System: Production environment. Development & Test environment. The backup of the system is assured through a Disaster Recovery Center	
Decisional System	

SAFIR Operational System: Document flow

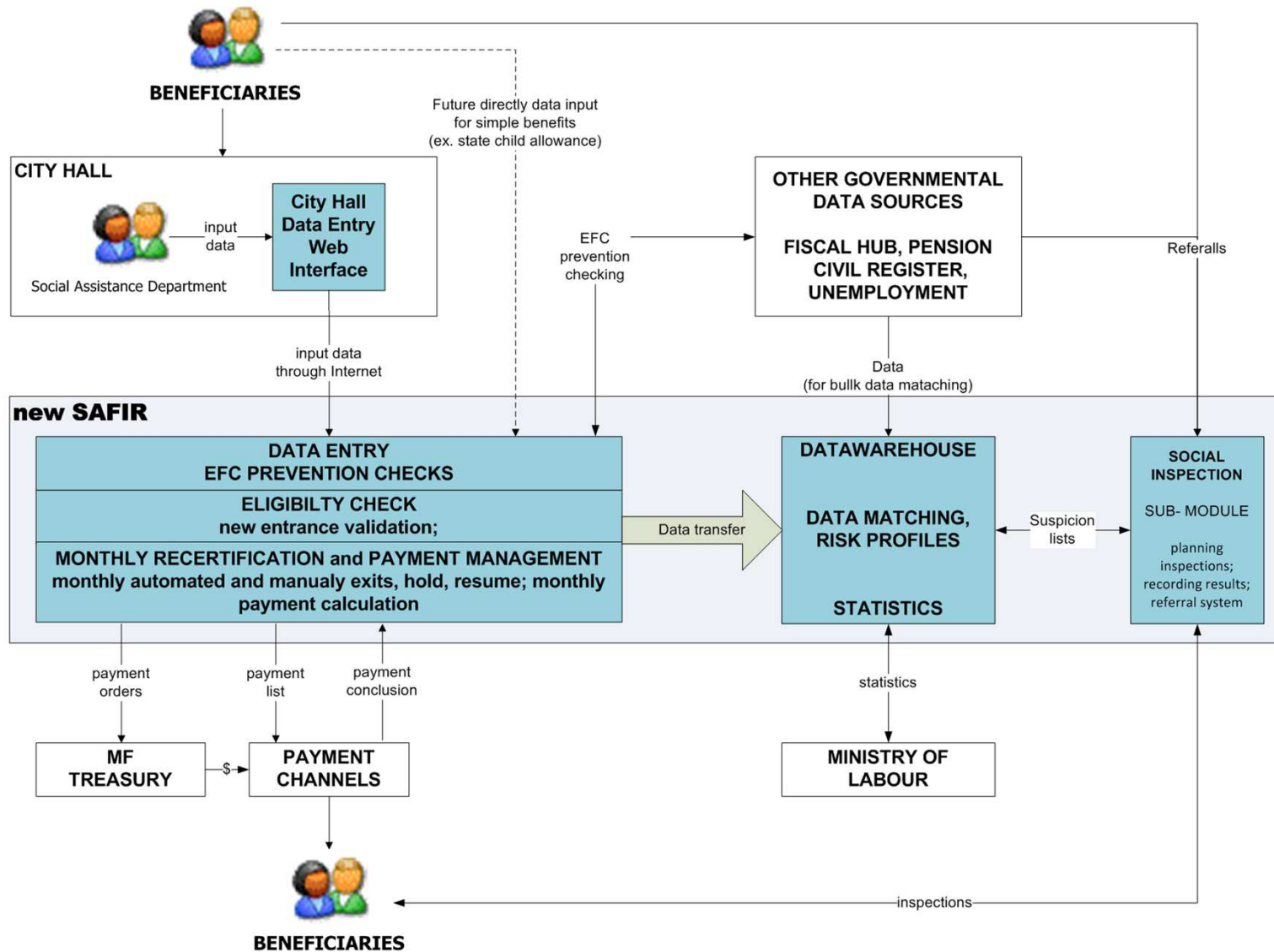


Road ahead:

Plans to expand the functionalities of the MIS

- Increase coverage of the MIS to new programs:
 - Minimum Social Insertion Program (MSIP), that consolidate all means-tested programs into a flagship anti-poverty program
 - Disability allowance programs
- New data entry modules:
 - direct data entry of eligibility and recertification at city hall level
 - data input using recognition software
- New and dedicated business module for the Social Inspection (planning inspections; recording results; analytics)
- Improved integration with Financial/Accounting System:
- Improved Decision-Maker Module

Roads ahead: future SAFIR main flows



Roads ahead: future MIS and Social Inspection flow

