

Ministry of Social Security and Labour

Visit of a delegation of the Ministry of Civil Affairs of the People's Republic of China

28 May 2018 Vilnius Lithuania



MINISTRY OF SOCIAL
SECURITY AND LABOUR
REPUBLIC OF LITHUANIA

History

- As early as in 1918, a separate Ministry of Public Works and Catering was established in Vilnius, consisting of Social Security, Catering, and Labour Departments.
- In 1924, the Labour and Social Security Department was reorganised into the Chief Labour and Social Security Inspectorate.
- In 1937, the institution was again renamed as the Labour and Social Security Department.
- After the Act of the Re-Establishment of the State of Lithuania was signed on 11 March 1990, the Minister of Social Security was appointed on 17 March, followed by the appointment of the Minister of Social Security and Labour on 12 July 1994.

Mission of the Ministry

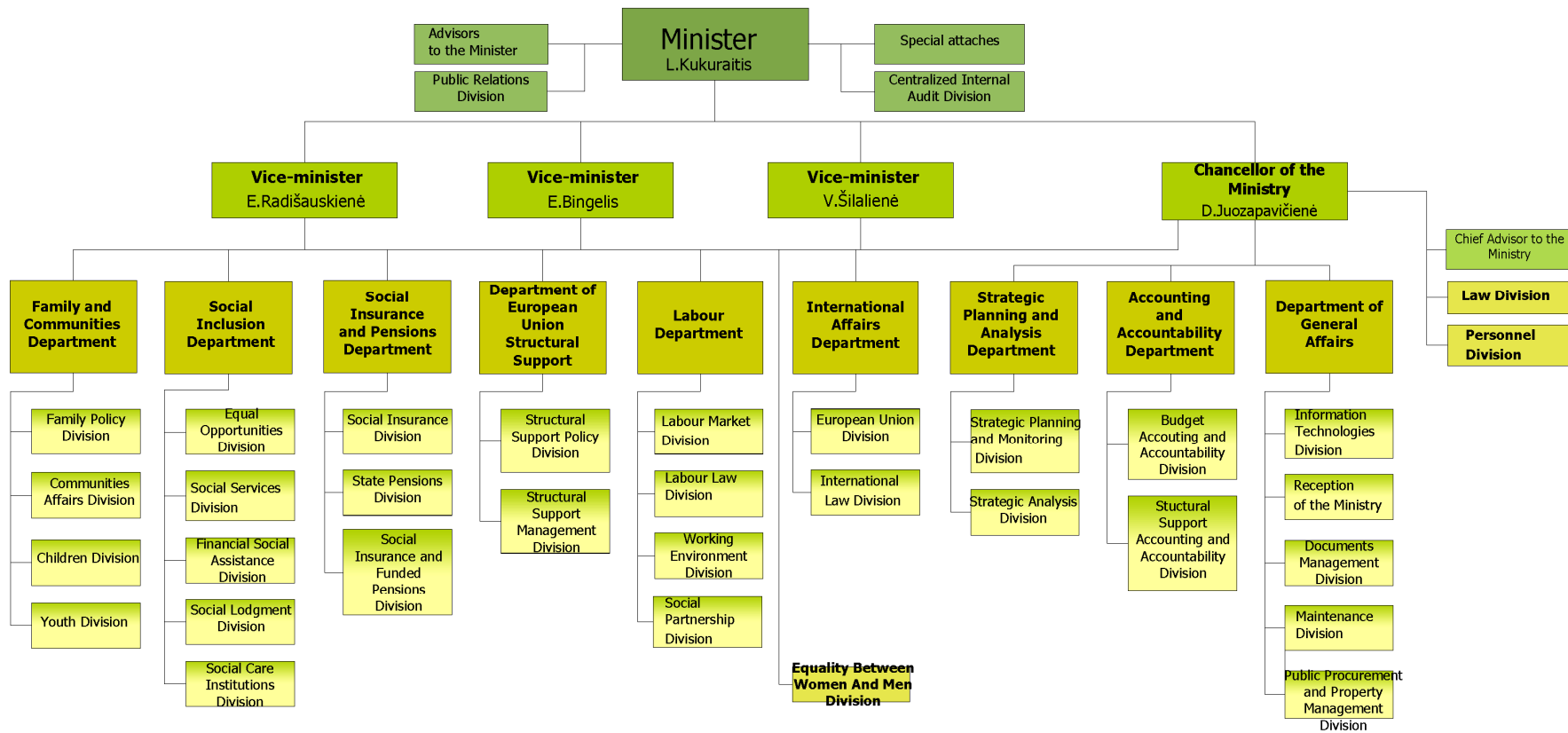
- To ensure family welfare, social safety and social cohesion as well as to create opportunities for qualitative employment by implementing the policy of social security and labour

The main goal of the Ministry

To pursue that every Lithuanian citizen is able:

- to live a dignified and provided life
- has the possibility to work and earn
- reconcile family and work responsibilities
- create and share
- achieve self-realisation
- has all social guarantees
- receives necessary assistance under complicated life circumstances

MANAGEMENT STRUCTURE



Staff

- 237 staff members
- 213 staff members have higher university education; others have higher non-university or secondary education
- 3 staff members hold a doctoral degree

Activity areas of the Ministry

- Employment and labour market
- Social dialogue
- Labour law
- Working environment
- Social insurance and pensions
- Social assistance and social services
- Equal opportunities and social integration of people with disabilities
- Equality between women and men
- Demographic policy
- Family and protection of the rights of the child
- European Union Structural Funds
- International cooperation and membership in the European Union

Labour law and employment

Labour law:

- labour relations
- remuneration for work
- social partnership
- corporate social responsibility

Labour market:

- employment support measures
- labour market services and monitoring
- active labour market measures
- social enterprises

Working environment:

- health and safety at work
- technical safety
- maintenance of potentially hazardous devices

Social inclusion (I)

Support for the acquisition of housing:

- state support for the acquisition or rental of housing
- development of social housing stock
- state subsidised housing loans

Social care:

- state social care institutions

Social inclusion (II)

Equal opportunities:

- social integration and vocational rehabilitation of people with disabilities
- levels and special needs related to disability and capacity for work
- integration of political prisoners and exiles
- social integration of foreigners granted asylum
- economic migration and integration of migrants

Social inclusion (III)

Social services:

- regulation of social services and social work
- qualification of social workers
- social services programmes

Social inclusion (IV)

Cash social assistance:

- child benefits and benefits for families raising children
- benefits for children deprived of parental care
- cash social assistance for poor residents
- cash social assistance for pupils
- assistance in the case of death

Family and community

Children

- protection of the rights of the child
- child guardianship (foster care)
- adoption
- protection of children from violence

Family policy

- measures, programmes to improve demographic situation
- reduction of domestic violence

Communities

- public programmes
- assistance for non-governmental organisations

Youth policy

- youth programmes
- youth employment and integration in the labour market
- social inclusion of youth

Social insurance and pensions (I)

Social insurance:

- pension insurance
- sickness and maternity insurance
- unemployment social insurance
- insurance of accidents at work and occupational diseases

Social insurance and pensions (II)

Pensions:

- old-age pensions
- loss of working capacity pensions
- widow's/widower's/orphan's pensions
- early old-age pensions
- pension accumulation system
- first and second degree state pensions
- state pensions to scientists, officials and military personnel
- state pensions for victims
- pension payments
- compensation payments

Equality between women and men

- policy implementation in the areas of social security and labour within the competence of the Ministry
- coordination of actions ensuring equal opportunities between women and men in all areas
- securing the fulfilment of EU and international obligations in terms of gender equality

Subordinate institutions

- Lithuanian Labour Exchange
- State Labour Inspectorate
- State Social Insurance Fund Board (SODRA)
- Department for the Affairs of Disabled
- Department of Youth Affairs
- Department of Supervision of Social Services
- State Child Rights Protection and Adoption Service
- Disability and Working Capacity Assessment Office
- Children's Maintenance Fund Administration
- Contention Commission

Subordinate budgetary bodies

- Technical Assistance Centre for the Disabled
- Refugees Reception Centre
- Social care institutions (38)
- Centres of sign language interpreters (5)