



MINISTERUL MUNCII  
ȘI JUSTIȚIEI SOCIALE

# Promoting and protecting rights of adult persons with disabilities

**Social Benefits Policies Directorate**  
**Cristina Grozavu, Public**  
**Manager**  
**Bucharest – 13 September 2017**



MINISTERUL MUNCII  
ȘI JUSTIȚIEI SOCIALE

**Legislative special framework**

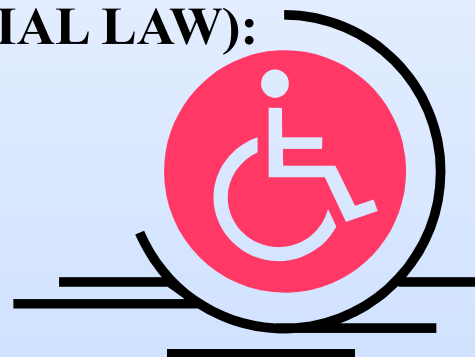


Law no. 448/2006 on the protection and promotion of the rights of persons with disabilities (with all modifications and completions after 2006)



MINISTERUL MUNCII  
ȘI JUSTIȚIEI SOCIALE

**DEFINITION: (ADULT) PERSONS WITH DISABILITIES  
(ACCORDING WITH THE SPECIAL LAW):**



“persons with disabilities are those persons who, because of social environment, who is not adapted to their physical, sensory, mental and/or associated deficiencies, totally hinders them or limits their access to equal opportunities for society, block them totally or limited them the chance to have equally opportunities to community life, and need to have special protections for their integration and social inclusion”.



## 1. EVALUATING ADULT PERSONS WITH DISABILITIES

**HOW?**

762/2007 Order- socio-psihomedical criteria's for assessment of classification in grade and type of disability.

**WHO?**

County commission for assessment of classification in grade and type of disability: social worker, doctor; psychologist, etc.

**WHAT  
?**

Complex evaluation service (generate an classification report; individual recovery programme) – general directorate of social assistance and child protection.

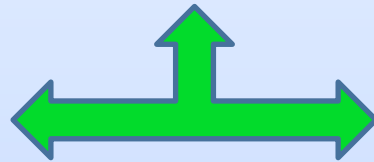
Certificate of classification in grade and type of disability.



## 2. EVALUATING ADULT PERSONS WITH DISABILITIES:

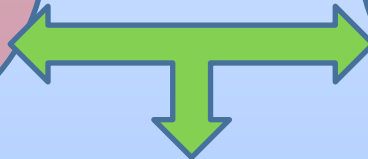
### GRADE

- medium,
- severe,
- accentuated \* (\* with personal assistant or accompanying allowance).



### TYPE

- physic,
- vizual\*,
- auditiv,
- deafblind,
- somatic,
- mental, psyhical,
- HIV/AIDS, asociated and rare disease.





MINISTERUL MUNCII  
ȘI JUSTIȚIEI SOCIALE

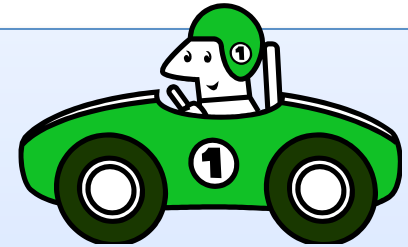


## **Rights and facilities of adult persons with disabilities**

- health services** (prevent, treatment and recovery): free medical services, free treatment, free medical devices – according with the framework contract, 1 free ticket for balneary treatment, free accommodation and meal for adult with disabilities companion.
- education and professional training** (no matter the age/grade – free access for any form of training).
- employment and reasonable accommodation (for work place).**
- legal assistance.**
- house, living environment,** in concordance with local resources.



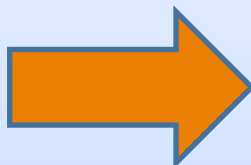
MINISTERUL MUNCII  
ȘI JUSTIȚIEI SOCIALE



- transport** - physical, informational and communicational environment (free access on all local transport lines, including metro; for accompaniers also and professional personal assistant).
- free time activities, free access for culture activities, sport and tourism** (bilete de intrare la spectacole, muzee, manifestări artistice și sportive- inclusiv însoțitori);
- facilities** (adult persons with severe and accentuated disability can benefit for a credit whose interest is paid from state budget, exemption for payment of road tax on national roads, exemption from tax salary, pensions and independent activities).
- evaluation/re-evaluation for examine at home persons with disabilities who cannot walk.**
- social assistance (social services and social benefits).**



**SOCIAL BENEFITS:**



monthly allowance (no matter of incomes)

- 234 lei (approx. 60 euros), for adult person with severe disability;
- 193 lei (50 euros), for adult persons with accentuated disability.

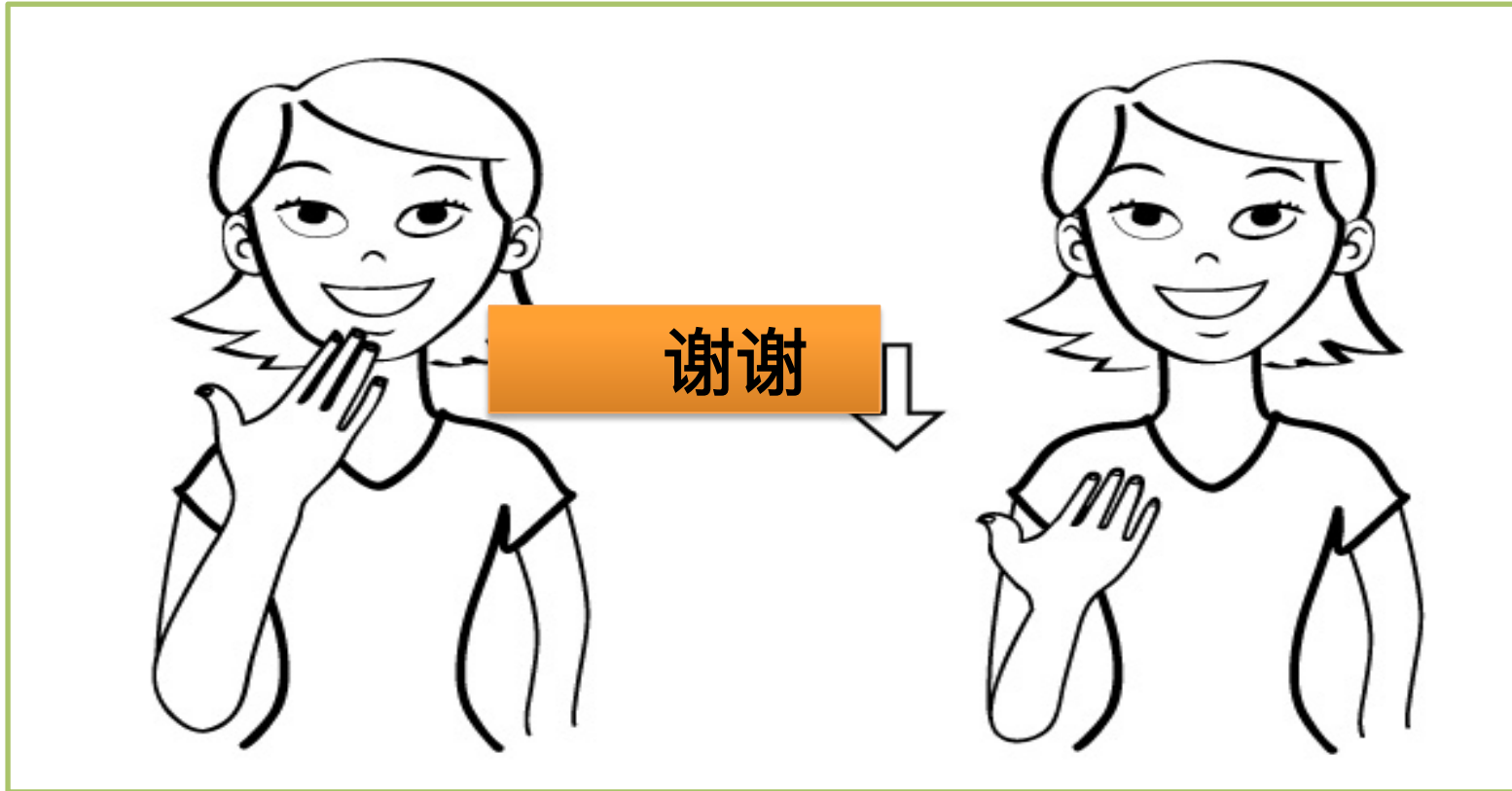
complementary monthly personal budget (no matter of incomes)

- 106 lei (approx. 20 euros), for adult person with severe disability;
- 79 lei (approx. 17 euros), for adult persons with accentuated disability.
- 39 lei (approx. 9 euros), for adult persons with medium disability.





MINISTERUL MUNCII  
ȘI JUSTIȚIEI SOCIALE





MINISTERUL MUNCII  
ȘI JUSTIȚIEI SOCIALE

Contact:

[Cristina.Grozavu@mmuncii.gov.ro](mailto:Cristina.Grozavu@mmuncii.gov.ro)