

Strengthening institutional capacity in social welfare system to improve social welfare targeting and reducing poverty

## **Presentation of French social protection system**

**June 2017**

---

Strengthening institutional capacity in social welfare system to improve social welfare targeting and reducing poverty

### **Administrative division**

---

European Union

Central level (President, Government, Parliament (National Assemblée 577 + Senate 341))

Regions (26) Prefect + Regional council

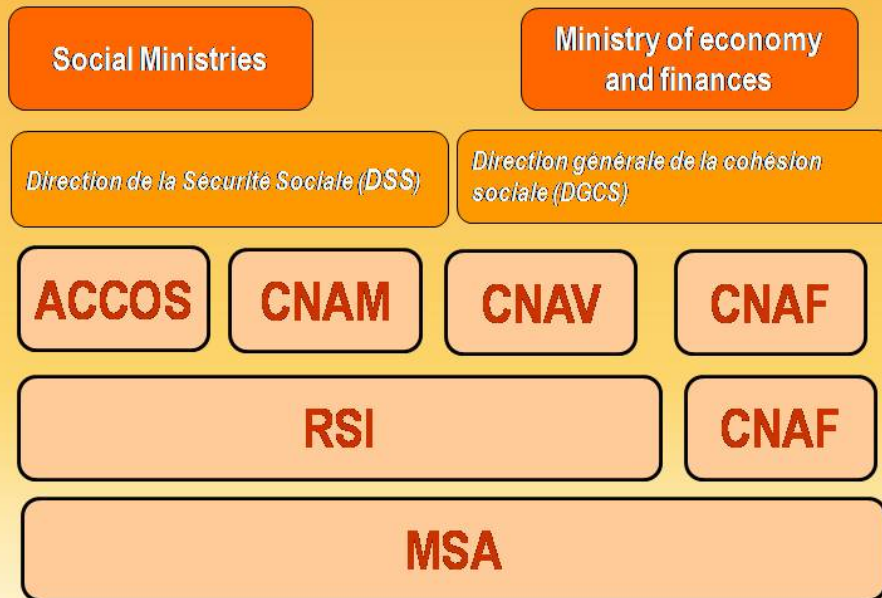
Department (100) Prefect + Department council

Commune (36 700) Major, Municipal council

---

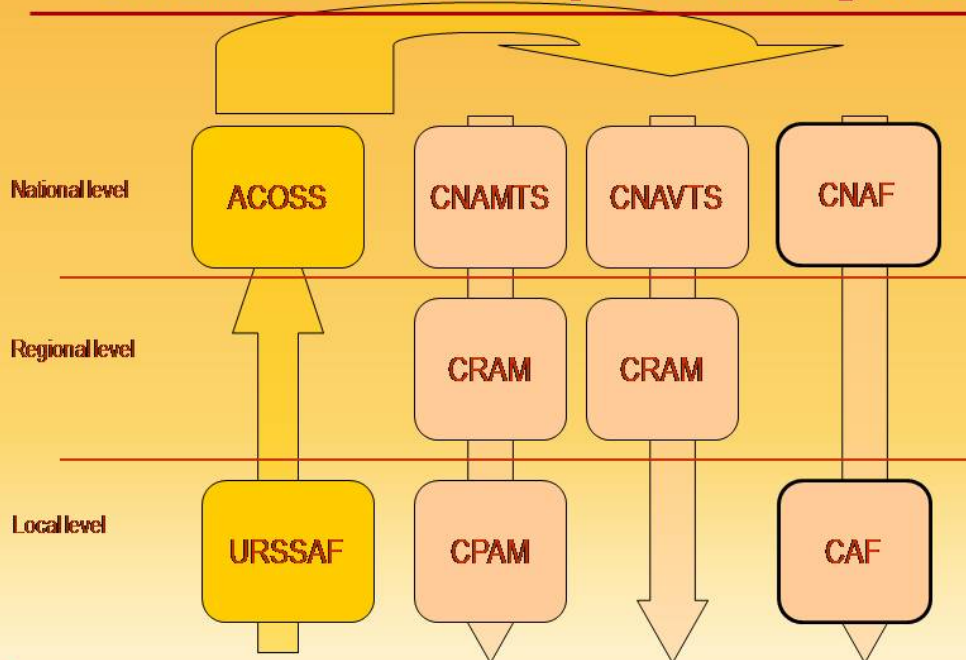
Strengthening institutional capacity in social welfare system to improve social welfare targeting and reducing poverty

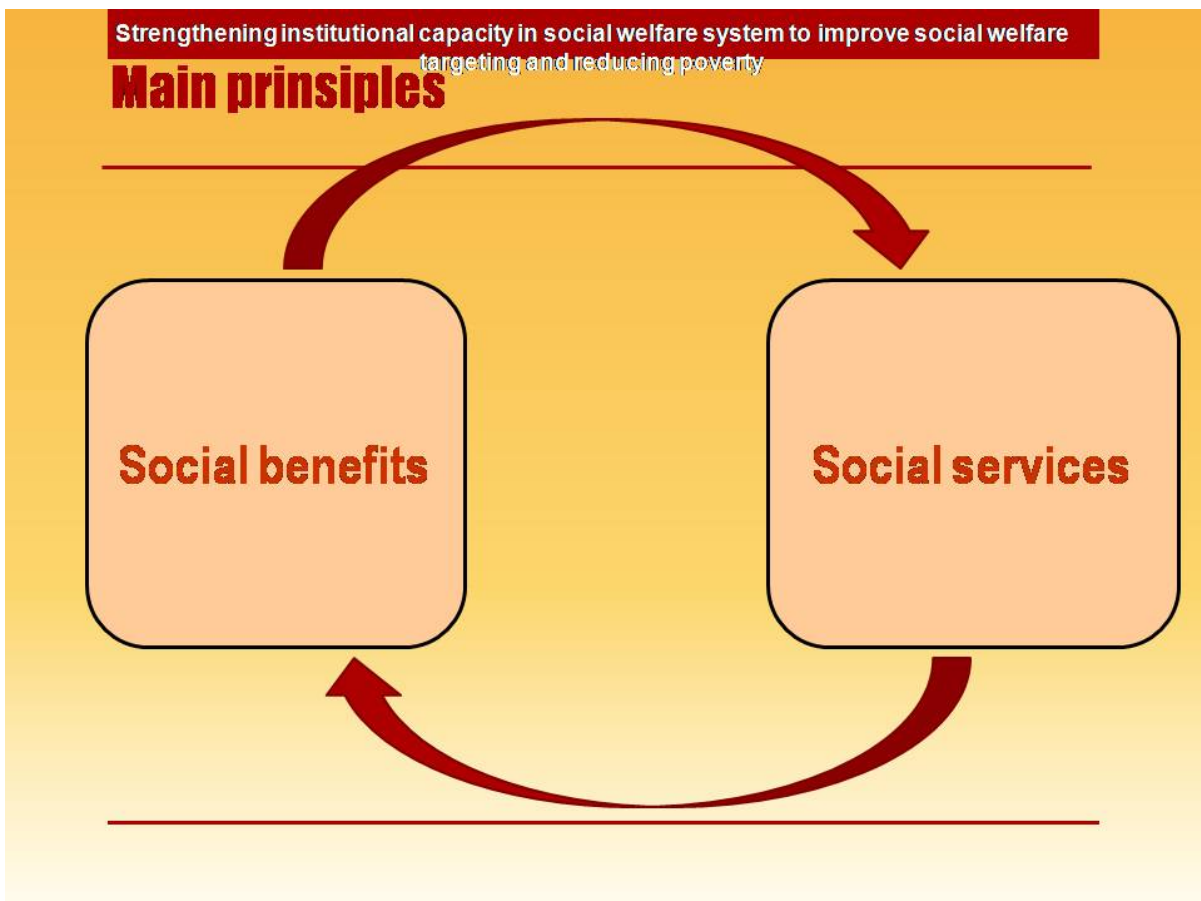
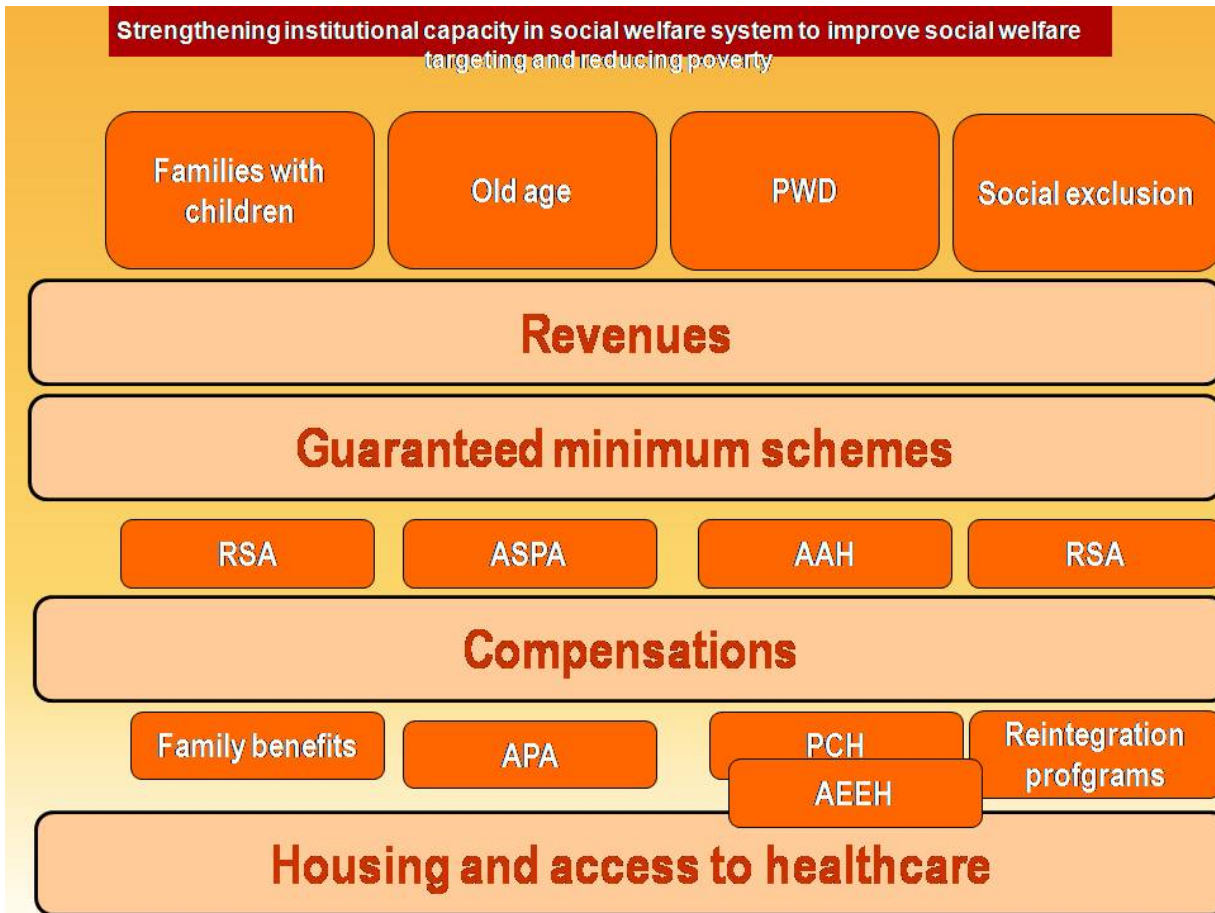
## Governance of social protection system



Strengthening institutional capacity in social welfare system to improve social welfare targeting and reducing poverty

## Governance of social protection system





Strengthening institutional capacity in social welfare system to improve social welfare  
targeting and reducing poverty

## Cooperation with CSO

« Law on association contract  
(Loi relative au contrat d'association)  
1 July 1901

- **Unregistered associations**
- **Registered associations** (Journal officiel – legal entity)
- **Association recognized for public utility**, obtain their status from Council of State (legs)

Strengthening institutional capacity in social welfare system to improve social welfare  
targeting and reducing poverty

## Activity Sectors

Secteurs d'activité (selon les libellés INSEE)	Associations (établissements)	Salariés	Masse salariale
Enseignement	10,3%	11,9%	12,4%
Activités sportives	18,0%	4,2%	3,1%
Activités humaines pour la santé	2,1%	7,3%	10,9%
Hébergement médico-social	5,6%	18,5%	20,7%
Action sociale sans Hébergement	12,6%	29,7%	23,8%
Activités liées à l'emploi	0,8%	2,1%	1,3%
Activités culturelles	11,9%	3,3%	3,0%
Activités récréatives et de loisirs	1,4%	0,6%	0,4%
Hébergement	1,4%	1,2%	1,3%
Restauration	0,8%	0,4%	0,4%
Activités des agences de voyages	1,1%	0,4%	0,5%
Activités des organisations patronales et consulaires	0,7%	0,4%	0,8%
Activités des organisations professionnelles	0,9%	0,7%	0,8%
Organisations religieuses	1,5%	0,6%	0,6%
Recherche-développement scientifique	0,4%	0,3%	0,6%
Agriculture, élevage, chasse pêche	1,3%	1,5%	1,6%
Autres activités répertoriées (1)	3,5%	3,2%	4,4%
Activités des organisations associatives non classées ailleurs	25,7%	13,6%	13,5%
<b>Total</b>	<b>100,0%</b>	<b>100,0%</b>	<b>100,0%</b>

Strengthening institutional capacity in social welfare system to improve social welfare targeting and reducing poverty

## Sources of financing

	Financements publics*	Financements privés
Action humanitaire	40,8%	59,2%
Action sociale/ Santé	66,7%	33,2%
Défense des droits et des causes	38,8%	61,2%
Education/ Formation/ Insertion	47,6%	52,4%
Sports, chasse et pêche	33,4%	66,7%
Culture	47,2%	52,7%
Loisirs et vie sociale	36,2%	63,7%
Economie, développement local	48,5%	51,5%
Autres	24,7%	75,4%
<b>Total</b>	<b>50,7%</b>	<b>49,3%</b>

Strengthening institutional capacity in social welfare system to improve social welfare targeting and reducing poverty

## Key figures

- **1 300 000 associations (20 /1000 pers.)**
- **59 Bn. € (3,3 % GDP) – 50 % public budgets**
- **1 800 000 jobs**
- **11 000 000 benevoles**

Strengthening institutional capacity in social welfare system to improve social welfare  
targeting and reducing poverty

## Study visit program

---

---